

2026 Virco Furniture Favorites

# Quick Ship

**Featuring Virco's  
Most Popular Models**

**QUICK SHIP PRODUCTS SHIP WITHIN 10 DAYS OF ORDER ACKNOWLEDGEMENT**



Call CPS at  
**800-237-4125**



*Equipment for Educators™*



# Proudly Supporting American Workers Since 1950:



One of America's iconic brands, Virco is the country's leading manufacturer and supplier of furniture and equipment for K-12 schools. Many manufacturing processes – from metal fabrication and woodworking, to plastic injection molding, powder coating and chrome plating – are done in-house at our two state-of-the-art facilities in Torrance, California, and Conway, Arkansas. Because we're involved in almost every process from beginning to end, we can assure the highest quality product at an affordable price. Our American workforce takes pride in their work, knowing that their expertise has earned Virco a reputation for integrity and value.

# QUICK SHIP

**PRODUCTS SHIP  
WITHIN 10  
BUSINESS  
DAYS OF  
ORDER  
ACKNOWLEDGEMENT.**

*See page 19 for additional information*



# CONTENTS

## SEATING

- 3 Sage™ Series
- 4 ZUMA® Series
- 6 Analogy® Series
- 7 N2 Series
- 7 2000 Series
- 8 9000 Series
- 9 3000 Series
- 17 Steel Folding Chairs

## DESKS

- 10 ZUMA® Series
- 12 785 Series
- 13 751 Series
- 13 765 Series
- 13 543 Series

## TABLES

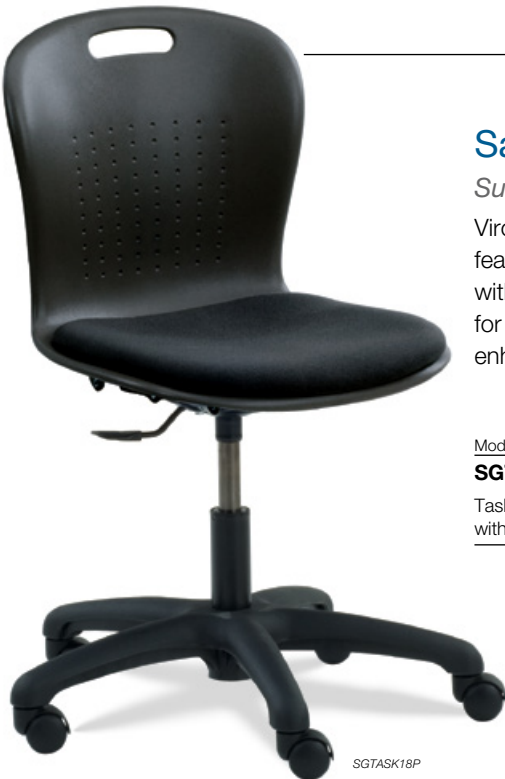
- 14 4000 Series
- 16 Mobile Bench
- 16 Mobile Stool
- 16 Convertible Bench

## COLORS

- 18 Frame, Plastic, Surface, and Upholstery Options

## INFORMATION

- 19 Terms & Conditions, Warranty, Changes & Cancellations



### Sage™ Series

#### *Substance & Style*

Virco's Sage™ classroom seating features a generously sculpted shell with a flexible, high-profile backrest for less fatigue, greater comfort and enhanced circulation.

Model

#### **SGTASK18P**

Task chair, 16"- 20<sup>1</sup>/<sub>2</sub>" adjustable-height seat with upholstered seat pad and five-star base.

5-STAR BASE: ■

SOFT PLASTIC/UPHOLSTERED PADDED SEAT: ■ ■ ■

**QUICK SHIP COLORS:** *Black soft plastic with Onyx fabric or Navy soft plastic with Midnight fabric. Char Black 5-star base.*

## ZUMA® Series

### Beautiful Balance

Best-selling ZUMA® furniture, designed by Peter Glass and Bob Mills, offers a perfect blend of style and ergonomic support. A wide range of models are available – all with the flexible ZUMA backrest – adding comfort to any classroom.

Model

#### ZLAB

Lab stool with 19½"- 27" adjustable-height seat, adjustable-height footring and five-star base.

SOFT PLASTIC SEAT: ■

5-STAR BASE: ■

**QUICK SHIP COLORS:** Navy soft plastic seat with Char Black 5-star base.



Model

#### ZTASK18

Task chair with 16"- 20½" adjustable-height seat and five-star base.

SOFT PLASTIC SEAT: ■ ■

5-STAR BASE: ■

**QUICK SHIP COLORS:** Navy or Black soft plastic seat with Char Black 5-star base.



4-leg chairs  
stack 6-high

Model

**ZU418**

18" seat height

**ZU415**

15" seat height

**ZU413**

13" seat height

FRAME:  SOFT PLASTIC SEAT:    

**QUICK SHIP COLORS:** Available with Navy, Cobalt Blue, Graphite or Black soft plastic seat with Chrome frame. Nylon-base glides.



Model

**ZFLROCK18**

Full-size bucket floor-level rocking chair. Sized for 5<sup>th</sup> grade to adult learning.

**ZFLROCK15**

Mid-size bucket floor-level rocking chair. Sized for K-4<sup>th</sup> grade.

SOFT PLASTIC SEAT:    

**QUICK SHIP COLORS:** Available with Green Apple, Cobalt Blue, Navy or Black soft plastic seat and base. Black rocker pad.



Model

**ZROCK18**

18" seat height rocking chair. For carpeted surfaces.

**ZROCK15**

15" seat height rocking chair. For carpeted surfaces.

FRAME: 

SOFT PLASTIC SEAT:  

**QUICK SHIP COLORS:** Chrome frame with Navy or Black soft plastic seat. Recommended for carpeted surfaces.

## Analogy® Series

### Competence & Value

Virco's Analogy® Series chairs combine the strength of heavy-gauge tubular steel legs with a smooth polypropylene shell and a comfortably contoured waterfall seat front.



4-leg chairs  
stack 8-high



AN18EL

Model

#### AN18EL

18<sup>1</sup>/<sub>2</sub>" seat height

#### AN18

18" seat height

#### AN16

16" seat height

#### AN14

14" seat height

FRAME:  SOFT PLASTIC SEAT:   

**QUICK SHIP COLORS:** Available with Navy, Black or Graphite soft plastic seat with Chrome frame.



ANROCK18

Model

#### ANROCK18

18" seat height

#### ANROCK16

16" seat height

FRAME:  SOFT PLASTIC SEAT:  

**QUICK SHIP COLORS:** Chrome frame with Navy or Cobalt Blue soft plastic seat.

Model

#### ANFLROCK18

Full-size floor rocker. Sized for 5<sup>th</sup> grade to adult learning.

#### ANFLROCK15

Mid-size bucket floor-level rocking chair. Sized for K-4<sup>th</sup> grade.

FRAME:  SOFT PLASTIC SEAT:   

**QUICK SHIP COLORS:** Available with Navy, Cobalt Blue or Green Apple soft plastic seat and base. Black rocker pad.



ANFLROCK18

## N2 Series

### *Bold New Legacy*

The Metaphor® shell has been designed to provide exceptional comfort for a fully-framed chair. The waterfall front, deep seat pocket and rolled back seat crest provide excellent ergonomic support.



*Metaphor 4-leg chairs are designed for true vertical stacking up to 8 high.*



Model \_\_\_\_\_

**N218EL**

18<sup>1</sup>/<sub>4</sub>" seat height

**N218**

18" seat height

**N216**

16<sup>1</sup>/<sub>2</sub>" seat height

**N214**

14<sup>1</sup>/<sub>2</sub>" seat height

**N212**

12<sup>1</sup>/<sub>2</sub>" seat height

FRAME: █ █ █

SOFT PLASTIC SEAT: █ █ █ █ █

**QUICK SHIP COLORS:** Available with Navy, Cobalt Blue, Graphite or Black soft plastic seat with Chrome frame. Nylon-base glides.

## 2000 Series

### *Enduring Value*

Virco's stackable 2018 model combines the strength of heavy-gauge tubular steel legs with a smooth polypropylene shell and a comfortably contoured waterfall seat front.



*Chairs can be stacked 5 high.*



Model \_\_\_\_\_

**2018**

18" seat height

**2016**

16" seat height

**2014**

14" seat height

**2012**

12" seat height

FRAME: █ █ █

SOFT PLASTIC SEAT: █ █ █ █ █

**QUICK SHIP COLORS:** Available with Navy, Wine Graphite or Black soft plastic seat with Chrome frame. Nylon-base glides.

## 9000 Series

### Iconic Original

With over 50 million units sold, this is the best-selling line of school furniture in the United States. If you're looking for an economical solution to outfit your classroom, this is it.



9018

Model

**9018**

18" seat height

**9016**

16" seat height

**9014**

14" seat height

**9012**

12" seat height

**9010**

10" seat height



9000 Series 4-leg chairs without casters can be stacked 8 high.

FRAME:  SOFT PLASTIC SEAT:    

**QUICK SHIP COLORS:** Available with Navy, Wine, Graphite or Black soft plastic seat with Chrome frame. Nylon-base glides.

## 9000 Series Chair Desks



9700BR

Model

**9700BR**

18" seat height with 12" x 20" x 25<sup>1</sup>/<sub>2</sub>" high-pressure laminate tablet arm work surface and wire bookrack.



9400BR

Model

**9400BR**

18" seat height with 18" x 24" high-pressure laminate work surface and wire bookrack.

FRAME:  SOFT PLASTIC SEAT:  LAMINATE TOP:  

**QUICK SHIP COLORS:** Chrome frame with Navy soft plastic seat and a Medium Oak high-pressure laminate work surface with clear lacquer edge, or Grey Nebula high-pressure laminate work surface with Black lacquer edge. Nylon-base glides.

## 3000 Series



Virco's 3000 Series chair and chair desk models resist stains and scratches, and are also remarkably chip-resistant. Their easily-cleaned hard plastic surfaces retain a bright, fresh look year after year.



Model
<b>3018</b>
18" seat height
<b>3016</b>
16" seat height
<b>3014</b>
14" seat height
<b>3012</b>
12" seat height






3000 Series chairs can be stacked 4 high.

FRAME:  MARTEST® 21 HARD PLASTIC SEAT: 

**QUICK SHIP COLORS:** Chrome frame with Navy Martest® 21 hard plastic seat and back. Nylon-base glides.






Model
<b>3400BRM</b>
18" seat height with 18" x 24" FRW™ hard plastic work surface. Wire bookrack.

FRAME:  FRW HARD PLASTIC TOP:   
MARTEST® 21 HARD PLASTIC SEAT: 

**QUICK SHIP COLORS:** Chrome frame with Navy Martest 21 hard plastic seat and back and Sandstone or Grey Nebula FRW hard plastic work surface. Nylon-base glides.



Model
<b>3700BRM</b>
18" seat height with a 14 1/2" x 20" x 28" FRW hard plastic work surface. Wire bookrack.

FRAME:  FRW HARD PLASTIC TOP:   
MARTEST® 21 HARD PLASTIC SEAT: 

**QUICK SHIP COLORS:** Chrome frame with Navy Martest 21 hard plastic seat and back and Sandstone FRW hard plastic work surface. Nylon-base glides.

## ZUMA® Series Desks

With a wide selection of adjustable-height student desks ZUMA provides solutions to a variety of classroom environments. With an adjustable 22"-34" high work surface, these stylish desks are available with nylon-base glides.



Model

### ZBOOMBMM

Adjustable-height desk with plastic open-front book box. 28" x 28" FRW hard plastic work surface. Used to create groups of four.

FRAME: ■ lower leg is chrome

FRW HARD PLASTIC TOP: ■ ■ ■

SOFT PLASTIC BOOK BOX: ■

**QUICK SHIP COLORS:** Fusion Maple or Looks Likatre  
FRW hard plastic top with Silver Mist upper frame. Navy soft plastic open-front book box. Adjustable-height Chrome lower legs with nylon-base glides.



Model

### ZBOOMBRM

Adjustable-height desk with a wire bookrack. 28" x 28" FRW hard plastic work surface. Used to create groups of four.

FRAME: ■ lower leg is chrome

FRW HARD PLASTIC TOP: ■ ■ ■

**QUICK SHIP COLORS:** Fusion Maple or Looks Likatre  
FRW hard plastic top with Silver Mist upper frame. Chrome open-front wire bookrack. Adjustable-height Chrome lower legs with nylon-base glides.



Model

### ZBOOMMM

Adjustable-height desk. 28" x 28" FRW hard plastic work surface. Used to create groups of four.

FRAME: ■ lower leg is chrome

FRW HARD PLASTIC TOP: ■ ■ ■

**QUICK SHIP COLORS:** Fusion Maple or Looks Likatre  
FRW hard plastic top with Silver Mist upper frame. Adjustable-height Chrome lower legs with nylon-base glides.



ZHEXBOXM

Model

### ZHEXBOXM

Adjustable-height desk with plastic open-front book box. 33" x 21<sup>1</sup>/<sub>8</sub>" FRW hard plastic work surface. Used to create groups of three, four or six.

FRAME: ■ lower leg is chrome

FRW HARD PLASTIC TOP: ■ ■

SOFT PLASTIC BOOK BOX: ■ ■

**QUICK SHIP COLORS:** Silver Mist upper frame. Fusion Maple FRW hard plastic top with Navy soft plastic open-front book box, or Looks Likatre FRW hard plastic top with Black open-front book box. Adjustable-height Chrome lower legs with nylon-base glides.



ZHEXM

Model

### ZHEXM

Adjustable-height desk with 33" x 21<sup>1</sup>/<sub>8</sub>" FRW hard plastic work surface.

FRAME: ■ lower leg is chrome

FRW HARD PLASTIC TOP: ■ ■

**QUICK SHIP COLORS:** Fusion Maple or Looks Likatre FRW hard plastic top with Silver Mist upper frame. Adjustable-height Chrome lower legs with nylon-base glides.



ZADJ2026BOXM

Model

### ZADJ2026BOXM

Adjustable-height desk with plastic open-front book box. 20" x 26<sup>1</sup>/<sub>8</sub>" FRW™ hard plastic work surface.

FRAME: ■ lower leg is chrome

FRW HARD PLASTIC TOP: ■

SOFT PLASTIC BOOK BOX: ■ ■

**QUICK SHIP COLORS:** Fusion Maple hard plastic work surface. Silver Mist upper frame with Navy or Black soft plastic open-front book box. Adjustable-height Chrome lower legs with nylon-base glides.



ZADJ2026M

Model

### ZADJ2026M

Adjustable-height desk with 20" x 26<sup>1</sup>/<sub>8</sub>" FRW hard plastic work surface.

FRAME: ■ lower leg is chrome

FRW HARD PLASTIC TOP: ■

**QUICK SHIP COLORS:** Fusion Maple hard plastic work surface with Silver Mist upper frame. Adjustable-height Chrome lower legs with nylon-base glides.



## 751 Series Lift-Lid Desks

751 Series desks feature dual closing devices and sturdy steel hinges for a quiet, reliable performance.



751MBB

Model

### 751MBB

Lift-lid desk with metal book box. 18" x 24" high-pressure laminate work surface.

### 751MBBM

Lift-lid desk with metal book box. 18" x 24" FRW hard plastic work surface.

FRAME: ■ lower leg is chrome METAL BOOK BOX: ■  
LAMINATE TOP: ■ ■ FRW HARD PLASTIC TOP: ■ ■

**QUICK SHIP COLORS:** Char Black upper frame with adjustable-height Chrome lower legs. Char Black metal book box. Nylon-base glides. 751MBB available with Medium Oak high-pressure laminate lift-lid work surface and clear lacquer edge, or Grey Nebula high-pressure laminate lift-lid work surface with Black lacquer edge. 751MBBM available with Sandstone or Grey Nebula FRW hard plastic lift-lid work surface.

## The Jr. Executive Desk

Adjustable-height single student desk with integrated modesty panel and side-mounted storage compartments.

Model

### 765MBB

20" x 34" high-pressure laminate desk top with metal side-storage compartment and molded modesty panel.

### 765MBBM

20" x 34" FRW hard plastic desk top with metal side-storage compartment and molded modesty panel.



765MBB

FRAME: ■ lower leg is chrome PLASTIC MODESTY PANEL: ■  
LAMINATE TOP: ■ ■ FRW HARD PLASTIC TOP: ■ ■ METAL STORAGE: ■

**QUICK SHIP COLORS:** Char Black frame with adjustable-height Chrome lower legs. Black metal storage and Black molded modesty panel. Nylon-base glides. Model 765MBB available with Medium Oak high-pressure laminate work surface and clear lacquer edge, or Grey Nebula high-pressure laminate work surface with Black lacquer edge. Model 765MBBM available with Sandstone or Grey Nebula FRW hard plastic work surface.

## Administrative & Instructor Station

Virco's collection of administrative and instructor stations give you a great mix of quality construction, understated styling, storage solutions and technology support.



543

Model

### 543

Steel-frame desk with right-side, 2-drawer pedestal and center pencil drawer.

FRAME: ■ Chrome legs and drawer pulls LAMINATE TOP: ■ ■

**QUICK SHIP COLORS:** Char Black upper frame and drawers with Chrome legs. Medium Oak or Grey Nebula high-pressure laminate work surface with Char Black banding. Nylon-base glides.

## 4000 Series Activity Tables

At home, in classrooms, training rooms, workrooms and mailrooms, Virco 4000 Series Activity tables, featuring 1<sup>1</sup>/<sub>8</sub>" thick tops, are especially great for everyday activities or for collaborative learning environments.

### 4000 Series Table Shapes



Rectangle



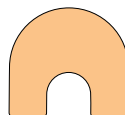
Trapezoid



Kidney



Round



Horseshoe

## 4000 Series

These tables feature a sturdy thin profile leg design with three adjustable leg height options. Models with LO legs adjust table height from 17"-25". Standard models adjust table height from 22"-30" and there is a leg kit that can be purchased to create a floor table that adjusts from 14<sup>1</sup>/<sub>4</sub>"-22<sup>1</sup>/<sub>4</sub>".



### 17"-25" Adjustable-Height Tops

Model	Top Size
<b>482436LO</b>	24" x 36"
<b>482448LO</b>	24" x 48"
<b>482460LO</b>	24" x 60"
<b>483048LO</b>	30" x 48"
<b>483060LO</b>	30" x 60"
<b>483072LO</b>	30" x 72"
<b>483672LO</b>	36" x 72"
<b>4848RLO</b>	48" Round
<b>48KID72LO</b>	72" Kidney
<b>48TRAP60LO</b>	60" Trap
<b>48HORSE60LO</b>	60" x 66" Horseshoe



FRAME: ■ ■ lower leg is chrome LAMINATE TOP: ■ ■

**QUICK SHIP COLORS:** Char Black or Silver Mist upper frame with adjustable-height Chrome lower legs. Nylon-base glides. Medium Oak or Grey Nebula high-pressure laminate work surface with Char Black banding.



## 22"-30" Adjustable-Height Tops

Model	Top Size
482436	24" x 36"
482448	24" x 48"
482460	24" x 60"
483048	30" x 48"
483060	30" x 60"
483072	30" x 72"
483672	36" x 72"
4848R	48" Round
48KID72	72" Kidney
48TRAP60	60" Trap
48HORSE60	60" x 66" Horseshoe



## 4000 Series Floor Table Leg Kit

Converts 4000 Series tables to 14<sup>1</sup>/<sub>4</sub>"-22<sup>1</sup>/<sub>4</sub>" floor tables.



Model

### 48FLRLEG

Pack of 4000 Series Chrome floor table conversion legs. 14<sup>1</sup>/<sub>4</sub>"-22<sup>1</sup>/<sub>4</sub>" table height.

LOWER LEG IS CHROME

**QUICK SHIP COLORS:** Chrome lower leg with nylon-base glides.

## Optional Storage

Add an optional book box to select 4000 Series activity tables.



Model

### UBOOK

Plastic book box

PLASTIC BOOK BOX: ■

**QUICK SHIP COLORS:** Black plastic book box.

## Mobile Bench and Stool Tables

Virco® mobile tables are remarkably easy to use. Specially designed torsion bars help you fold and unfold our UL® listed stool and bench tables quickly and smoothly.

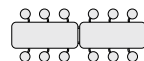


MTB172912



MTS17291212

Model	Seat Height	Seats	Table Height	Top Size
<b>MTB172912</b>	17"	12-16	29"	30" x 144"
<b>MTS17291212</b>	17"	12	29"	30" x 144"



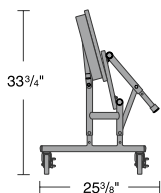
FRAME: █ █ █ LAMINATE TOP: █ █ █ PLASTIC SEAT: █ █ █

**QUICK SHIP COLORS:** Chrome frame and Navy stools with Medium Oak or Grey Nebula high-pressure laminate surface with Char Black banding.



## Convertible Bench Table

Convertible bench tables bring exceptional versatility to multi-purpose applications.



MTC8

Model	Top Size
<b>MTC8</b>	15" x 96"

FRAME: ■ LAMINATE TOP: ■

**QUICK SHIP COLORS:** Char Black upper frame, Chrome lower frame with Grey Nebula high-pressure laminate surface with Char Black banding.



## Steel-Frame Folding Chairs

Folding chairs provide quick, convenient seating at a moment's notice and are "must haves" in the field of multi-purpose furniture.



188

Model \_\_\_\_\_

**188**

Steel folding chair with fabric upholstered seat and back.

FRAME: ■ FABRIC UPHOLSTERY: ■

**QUICK SHIP COLORS:** Sedona Sailor fabric with Silver Mist frame.



162

Model \_\_\_\_\_

**162**

Steel folding chair.

FRAME: ■ ■

**QUICK SHIP COLORS:** Char Black or Silver Mist.

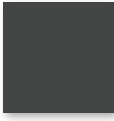
# COLORS

Virco offers a range of colors for the products in this brochure. Below are swatches as referenced by the specific models.

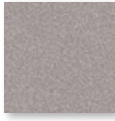
## Frame



*Chrome*  
CHRM



*Char Black*  
BLK01



*Silver Mist*  
GRY02

## Soft Plastic



*Green Apple*  
GRN12



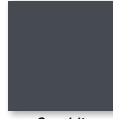
*Navy*  
BLU51



*Cobalt Blue*  
BLU65



*Wine*  
RED50



*Graphite*  
GRY41

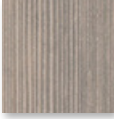


*Black*  
BLK01

## FRW™ Hard Plastic Tops



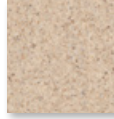
*Fusion Maple*  
BRN38



*Looks Likatre*  
WHT66

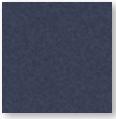


*Grey Nebula*  
GRY91



*Sandstone*  
BRN96

## Martest® 21 Hard Plastic Seats & Backs



*Navy*  
BLU51

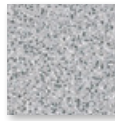
## High-Pressure Laminates



*Fusion Maple*  
MPL385



*Medium Oak*  
OAK084



*Grey Nebula*  
GRY091

## 188 Fabric Upholstery



*Sedona Sailor*  
BLU204

## Sage™ Plastic/Upholstery



NAVY

*Midnight*  
BLU266



BLACK

*Onyx*  
BLK261

**CAUTION:** Due to color reproduction variability in printed materials and digital media, Virco recommends that you review product colors on sample coupons or swatches before purchasing to confirm that your product color choices coordinate with the interior spaces for which these products are intended. Virco will provide complimentary sample coupons or swatches for plastic, laminate, powder coat paint and upholstery colors; however, it is the customer's responsibility to request these sample materials. Once you've submitted your request, your Virco Sales Representative will be happy to assist you with this process.

## Virco Warranty

Virco will repair or replace, at its option, any Virco furniture or equipment product which proves to be defective in original material or workmanship that may become evident within the first 10 years of the date of purchase and 5 years from the date of purchase for glides, floor rocker foam pad, casters, pneumatic cylinders and torsion bars on mobile folding tables. This is your sole and exclusive remedy. This warranty covers products manufactured after January 1, 2017, as long as product is owned by original purchaser, and is subject to limitations.

## Terms and Conditions:

- Selections apply to orders taken by December 31, 2026 for immediate delivery.
- Requested Delivery Date Range

The requested delivery date is a required element of the order. Failure to indicate a delivery date will result in the order shipping as soon as it is ready. Indication of a delivery date that is earlier than the stated lead times for the items on the order will result in the order shipping as soon as it is ready. If a specific delivery date is needed, please indicate a range of dates that are acceptable as it may not be possible to deliver on a specific date. If an order cannot be received until a certain date, please indicate a "not before" date, with the understanding that the order can arrive anytime after that date and will not necessarily arrive the next day. During our peak season of July and August, delivery dates may be extended due to heavy demand for both product and transportation. Accepting orders as soon as they are ready is the best way to ensure your order is fulfilled.

If you are seeking the fastest delivery times, order products from different groups (Quick Ship models or Campus Basics models) on different purchase orders. Orders with product from mixed groups will be shipped when complete, which will be at the longest model lead time. Any orders for Stocked models only will be shipped as soon as possible, unless otherwise requested. Due to the quick turnaround of these orders, no shipping notification will be provided. Sorry, but we cannot accept C.O.D. orders. We do accept Visa, Master Card, American Express, and Discover as forms of payment.

## Changes or Cancellations of Orders

Purchase orders acknowledged by Virco Inc. cannot be changed or cancelled without Virco Inc.'s consent, which consent may be conditioned upon Customer's agreement to pay increased or additional expenses resulting from the requested change or cancellation, including but not limited to a twenty-five percent (25%) cancellation charge if order is cancelled or changed within a minimum of twenty (20) days prior to expected delivery date as acknowledged. Products with custom options cannot be cancelled or returned.

2026 Virco Furniture Favorites

# Quickship

**Featuring Virco's  
Most Popular Models**

Visit [www.virco.com](http://www.virco.com) to see the full offering of Virco products



All furniture in this flyer has earned GREENGUARD® Gold certification.

2027 Harpers Way  
Torrance, CA 90501

26 QS DEALER-NP