



HIGHER EDUCATION INSIGHTS





CONTENTS

3 Introduction

5 Insights

Think KI	5
Simplify College Space Design	7
College Furniture Challenges	9
University Branding	11
Planning Ideas	13

15 Inspiration

For more inspiration, visit ki.com/highered



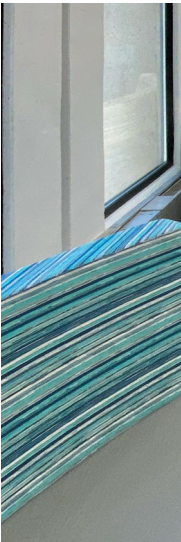
INTRODUCTION

Fluid, Interactive and Engaging

KI designs and delivers responsive higher education learning spaces.

Supporting the development of world-class learning and campus environments has been – and always will be – at the very core of KI. It's what we do best. We work with our educational partners to persistently grow our knowledge, understanding and experience with the Higher Education market. This helps us support a “customer of one” experience and develop a road map for future innovation specific to your unique learning experience.

From cyberspace to physical space, KI understands the needs of higher learning. We're at the forefront of new ways to design and deliver responsive educational spaces with innovations that complement today's current educational concepts and university furniture that supports the learning environments of the future – fluid, interactive, engaging.





Think KI

For your campus furniture solutions.

KNOWLEDGE + INSPIRATION

Think adaptive learning. Think KI.

We understand that students learn best at their own pace, with a curriculum adapted to their specific aptitude. Truly, this is the most effective way to inspire, stir passion and connect to purpose—far beyond rote learning or traditional repetition.

In turn, this tailored approach delivers an exceedingly positive educational experience of organic learning and discovery.

KNOWLEDGE + INNOVATION

Think personal space. Think KI.

From advanced bio sciences to virtual gaming, we've seen unlimited innovations that enhance the learning experience. Contributions from various disciplines and technologies continue to help facilitators evolve teaching and learning tools—an especially critical topic during recent global challenges.

Wherever learning takes place, students need supportive tools and the capacity to grow their personal space—mentally, physically and emotionally.



KNOWLEDGE + INCLUSION

Think hands-on learning. Think KI.

At KI, we understand the visceral need to find a community, a tribe of one's own. Throughout the learning experience, this connection to community is essential. For students, attending school may be their first opportunity to explore a diverse world beyond the communities in which they were raised and connect with others on a more global perspective.

A variety of inclusive programs on campus can provide supplemental hands-on experiences to help students engage with applied learning opportunities.



LEARN MORE

ki.com/think-ki

10 FAVORITE KI PRODUCTS FOR LEARNING ENVIRONMENTS

If 2020 taught us anything, it was that learning environments need to be adaptable, flexible and scalable as students return to campus. That was evident based on the most-frequently ordered KI products on campuses across the nation. As you focus on maintaining safety and opening your doors, here are the products that helped our college/university clients these past 12 months.

- 1 Pirouette® Tables
- 2 Fixed Seating - Featuring Jury Base
- 3 Strive® Seating Collection
- 4 Learn2® Seating Collection
- 5 Dōni® Stack/Guest Collection
- 6 Connection Zone® Benching
- 7 Aristotle® Casegoods
- 8 MyPlace™ Lounge Furniture
- 9 Architectural Walls
- 10 WiggleRoom® Pod

Simplify Space Design

Complexity demands simplicity.

Colleges are complex places. At any given time, you'll find students learning in the classroom, socializing with friends, grabbing a bite in the dining hall, brainstorming for a group project after class, creating art or technology and more. That's a lot for one campus to handle.

Counter-intuitively, that kind of complexity demands simplicity. We're witnessing a design shift in college environments that can address an array of activities on campus. Let's take a look at some of those spaces and how to create them.

SIMPLICITY IN DESIGN

For a long time, colleges designed each space on campus to serve one purpose. Classrooms were designed for lectures,

libraries for studying, dorms for sleeping. But in today's rapidly evolving college environment, anything can happen anywhere.

Multipurpose environments can help schools accommodate an array of activities. For instance, versatile makerspaces with furniture that can easily rearrange, such as The Garage at Northwestern University, helps students engage their creative side. A single makerspace can accommodate a wealth of activities, including chemistry experiments, woodworking, robotics, culinary arts, 3D printing and more. Larger spaces that are used as classrooms, banquet halls, job fairs and more require adaptable and easily stored table and seating options.





Libraries and common areas witness a lot of activity, from eating lunch over a last-minute paper to impromptu study groups. In these spaces, schools can opt for lightweight, spacious worksurfaces that pair with lounge and booth seating. Students will gravitate toward these spaces because they work well for multitasking and varied needs. In the dorm room, students will sleep, eat, study, watch TV, get ready for a night out and more. Modular furniture is crucial for smaller spaces like these where less is more. Dorm beds, desks and storage designed to maximize space and student choice are the ultimate solution.

SIMPLICITY IN PROCESS

Striking a balance between simplicity and complexity may sound like a daunting task, especially when considering the needs of tens of thousands of students and multiple campuses. At KI, we believe that simplicity in the design process is just as important as the design itself.

We have the capacity to standardize and manufacture furniture for large-scale projects, or even modify and co-create products that are tailored to specific needs.

Our team of specialists can take on the project management burden from you and your team, guiding the process from the initial meeting to post-installation. We work hand-in-hand with your supporting dealers, designers and facilities personnel. Our team oversees delivery and installation, and after the fact, offers support through regular check-ins for life.

EFFORTLESS EDUCATION

To support the hustle and bustle of campus life, it's important to get back to the basics. With flexible, multipurpose pieces, students can make anything happen, no matter the location.

Furniture Challenges

Accommodating varying needs on campus.

Typical college students spend nearly all of their time on campus. Throughout the day, they need places to study, socialize, sleep, snack and everything in between.

It can be challenging for university staff and administrators to accommodate these varying needs when designing a new classroom, dorm or library.

CHALLENGE: VERSATILITY

SOLUTION: SPACE-SAVING RECONFIGURABILITY

Even though dorm rooms are 180 square feet on average, these small spaces are where students study for exams, watch movies with friends, get ready for a night out and catch up on sleep. So, it's important that students feel they have control over the one space that is theirs.

A lot of pressure is put on those designing these smaller spaces. Indeed, many colleges want to create inviting, inspiring dorm rooms but find themselves limited to the same wooden furniture that has dominated the market for half a century.



Think KI. We offer a bold alternative for dorm room furniture. With a sleek, modern aesthetic, RoomScape Residence Hall Furniture encompasses a variety of options for facilities managers to choose from, including single, loft and bunk beds; dressers; wardrobes; desk surfaces; tackboards and more. Students can easily personalize their space on-demand with uniquely customizable elements, like add-on shelving and overhang storage.

CHALLENGE: FURNITURE THAT DOESN'T LAST

SOLUTION: INDUSTRY-LEADING DURABILITY AND QUALITY

The college classroom is where students come up with new ideas, form relationships with their peers and learn from their professors and mentors. Each desk may seat up to a dozen students daily. Furniture might be constantly reshuffled to meet the needs of different classes.

All that movement naturally leads to a lot of wear and tear. It makes sense that university officials identify durability as one of their biggest concerns regarding college classroom design. They want to create inspiring spaces that will last for decades.

Think KI. We offer solutions for with industry-leading quality and warranties, designed to fit any budget so universities can create classrooms that will hold up through it all.



CHALLENGE: UNCOMFORTABLE OR IMPRACTICAL LIBRARIES

SOLUTION: A BALANCE OF COMFORT AND FUNCTION

When faced with a massive project or cumulative exam, students will spend hours, if not days, in their campus library. University staff recognize that it's crucial for library spaces to prioritize both function and comfort.

Think KI. Our soft lounge chairs and sofas provide a cozy place to get lost in a book or practice flashcards. Pair them with complementary worksurfaces and students have the best of both worlds: comfort and efficiency. For most students, it's essential to find a study spot near a power outlet. Furniture that offers integrated power options let students charge up their laptops. Larger surfaces let students spread out textbooks and project work while integrating power solutions that help them tackle whatever their week has thrown at them.

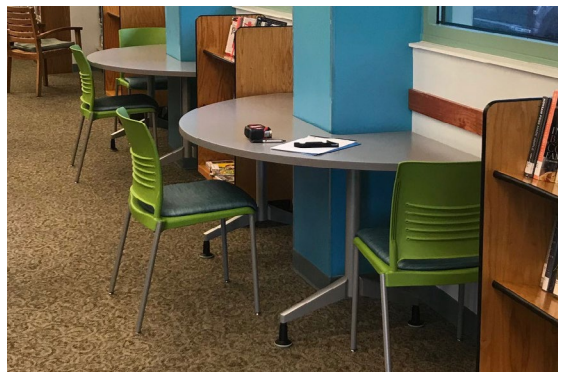


CHALLENGE: ARCHITECTURAL ANOMALIES AND HISTORICAL BUILDINGS

SOLUTION: MODIFIED OR CUSTOM-CREATED PRODUCT

Many colleges and universities continue to use historic buildings on campus, including some that are centuries old. Schools may not have the budget for new construction, or they may want to maintain older buildings for nostalgic reasons.

Think KI. We understand how to design around support beams, alcoves and other challenging architectural elements. Through our Infinity from KI program, we can modify or co-create products to meet the needs of unique spaces.



University Branding

Why it matters and how to achieve it.

Finding new ways to attract and retain the best and brightest student is more challenging than ever as enrollments trend downward. The “value proposition” of higher education requires a multi-pronged approach. This includes creating an authentic university brand identity – and incorporating it throughout campus.

IMPORTANCE OF A BRAND

A successful college brand identity communicates a clear message about the school’s values and offerings to its students. To achieve this brand goal, colleges and universities can start by learning about what students want out of their higher education experience – and then articulating how they can help them achieve their goals.

When seeking how to develop brand image for a university, listen to the students. Invest in their interests to ensure they have an experience worth sharing with others.

INCORPORATING THE BRAND

Every walk through campus is an opportunity for a university to communicate its brand to students, whether current or prospective.

Incorporating the brand can happen in subtle ways. Perhaps the entrance to the dining hall displays the school motto. Personalized tables and chairs in dining halls and cafes can display school colors or the logo. Custom storage solutions, whether in a locker room or a classroom, can conjure feelings of school pride at unexpected moments throughout





the day. Custom tables can also work around existing historic architecture that can be important to the brand of many universities.

GETTING STARTED

Each college and university has its own identity and reputation. Bringing that to life within the student experience gives the opportunity for physical environments to flex a one-of-a-kind feel throughout campus. Through the Infinity From KI program, which places the emphasis on latent needs identification, our team of experts can modify existing furniture solutions or co-create completely new furniture designs. This process can develop something completely unique to your college or university – even something that’s never been done before. In fact, the latest advancements in technology and agile manufacturing make achieving designs that support your particular identity or culture easier than ever.

BRINGING YOUR BRAND TO LIFE

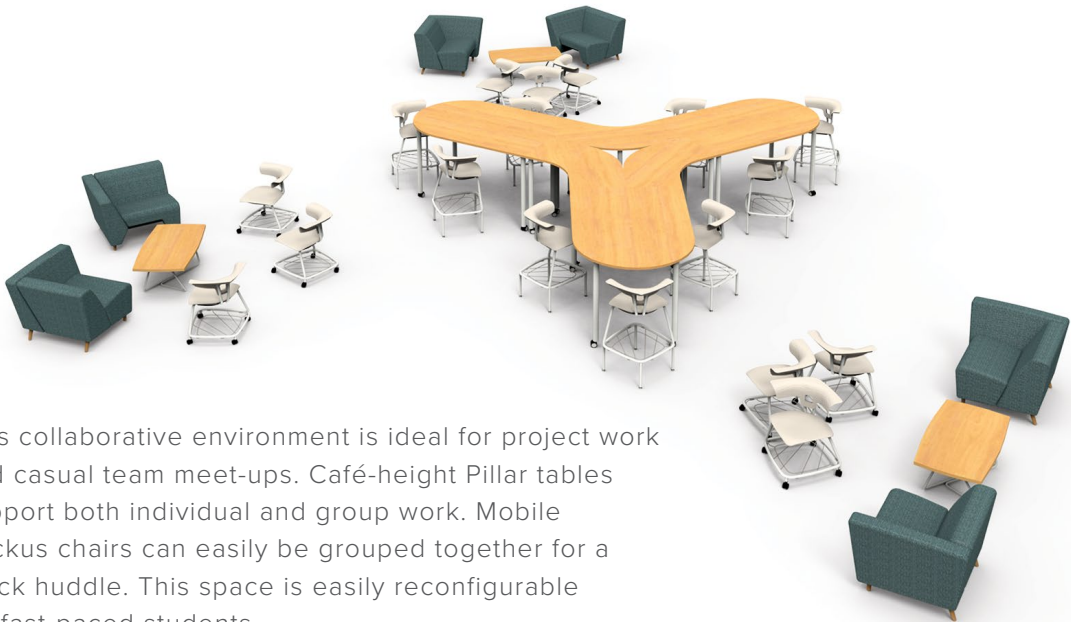
Defining and incorporating cohesive university branding throughout a campus can set a college or university apart from its peers and competitors – and make it a place students are proud to call home.

Let us help you bring your brand to life through strategically personalized furniture. By engaging custom furniture solutions, colleges and universities can make impressive statements in limitless ways. And with KI, it’s remarkably easy.



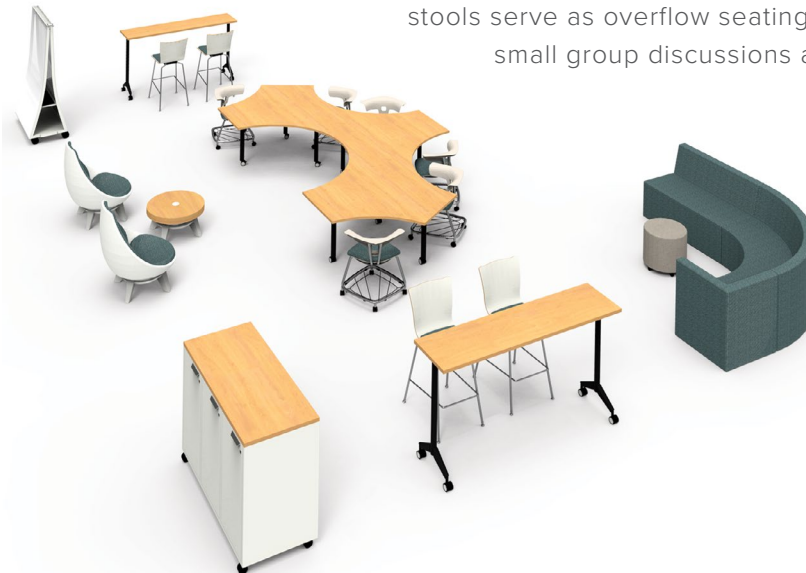
Planning Ideas

Be inspired!



This collaborative environment is ideal for project work and casual team meet-ups. Café-height Pillar tables support both individual and group work. Mobile Ruckus chairs can easily be grouped together for a quick huddle. This space is easily reconfigurable for fast-paced students.

This layout features a multi-purpose learning space with a variety of seat heights. MyPlace lounge and Apply stools serve as overflow seating or perfect pods for small group discussions after a presentation.



This space was designed to support a variety of learning styles. It includes spaces for ideation, interaction and focus. Mobile Dōni seating, Pirouette tables and Connection Zone screens make it easy to arrange and rearrange. Hub modular seating and MyPlace lounge shapes provide for more relaxed and informal collaborations.



This layout supports casual interaction and regeneration. Calida and Sway provide additional seating around the central MyPlace configuration. Along with markerboard table surfaces and Connection Zone screens, these elements create a flexible collaboration space.



GET INSPIRED!

Learning can take place anywhere and everywhere. Visit ki.com/highered for insight on furniture solutions that support the learning environments of the future.



Top: Signia task stools, Ruckus worktable
Bottom Left: Döni stack chairs, Athens tables, MyPlace lounge seating
Bottom Right: RoomScape residence hall system



Stout tables, LimeLite high-density stools and chairs, Gladly lounge seating, WiggleRoom pod



WiggleRoom super structure, LimeLite task chairs, Athens table, MyPlace lounge seating, C-Table, Calida occasional table.



Top: Jubilee lounge chairs, Döni task stools, Pillar table
Bottom: Strive nesting chairs, Pirouette tables



Strive stack chairs, MyPlace lounge seating, Athens tables



Top: Ruckus activity tables, LimeLite task stools and 4-leg chairs w/casters
Bottom: Apply cafe stools, MyPlace seating, Pillar tables, C-Tables



Top: Dōni 4-leg chairs w/casters, Connection Zone benching, Connection Zone wood leg table
 Bottom: MyPlace lounge seating, MyWay chairs, Sway chairs, Pirouette tables, Ruckus stools
 Back Inside Cover: Limelite high-density cafe stools and chairs, Serenade Gathering table, MyPlace lounge seating, Athens table, Pillar table.





KI is a trusted expert for furniture and wall systems around the globe.

USA | CANADA | MEXICO | UK | EUROPE | ASIA | MIDDLE EAST

1330 Bellevue Street • P. O. Box 8100 • Green Bay, WI 54308-8100 • 1-800-424-2432 • ki.com

© 2023 Krueger International, Inc. All Rights Reserved. Code KI-BR-000402/KI/PDF/0223

KI and Furnishing Knowledge are registered trademarks of Krueger International, Inc.